

Miniature S3F System

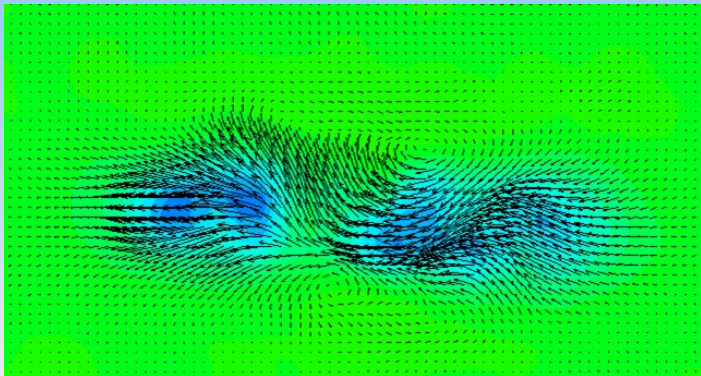
(FTS3F-DM)

Surface Stress Sensitive Film (S3F) is an optical instrument for measurements of skin friction. The basis of this measurement is an elastic film that deforms under the action of the applied loads. The reaction of the film is monitored by imaging the surface. The film reaction is then modeled with a calibration resulting in a continuous distribution of skin friction over the filmed surface.

The miniature S3F system utilizes a high-resolution camera to image ISSI's Surface Stress Sensitive Film (S3F) layer, polymerized on a glass window. This serves as a sensor for smaller applications such as insect and reptile studies as well as demonstration tool for potential customers for ISSI's FootSTEPS gait analysis system and ISSI's tire test sensor systems.

A series of fluorescent markers are applied just below the upper layer. These markers are displaced laterally during contact, primarily by shear forces. Cross-correlation analysis quantifies the displacements produced by shear.

3-D displacement maps provide rapid visualization of the shear patterns produced by contact. Reconstruction of the shear forces is provided by offline analysis using a calibration of the S3F with the measured displacements as inputs.

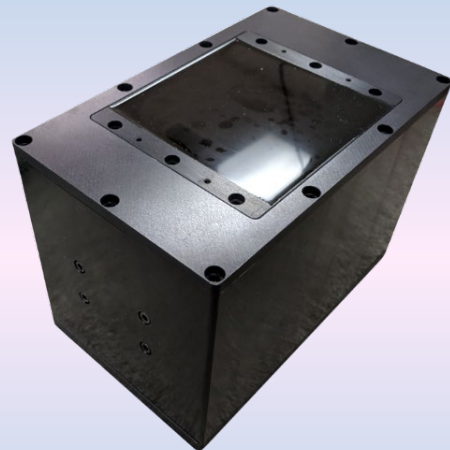


Spider Foot Print with Shear Vectors

Why S3F?

S3F provides high spatial-resolution images shear data at contact surface for a wide range of applications. The chemistry of an S3F layer can be altered or tuned to a specific application, making the S3F a versatile sensor for a wide range of applications from insect locomotion studies to hydrodynamics research to aircraft tire research.

Power	110-240 VAC, 50-60 Hz
Interface	USB 3.0
Pressure Range	15-700 kPa.
Linear Shear Range	3 to ± 100 kPa. Also not the saturation point.
Accuracy	$\pm 5\%$ of full scale for both pressure and shear
Data Capture Rate	15 fps
Spatial Resolution	1-2 mm
Crosstalk	Less than 3% between pressure and shear
Active Measurement Area	5 cm x 5 cm (2 in x 2 in)
Size	12.7 cm (L) by 20.3 cm (W) by 13.9 cm (H) (5 in by 8 in by 5.5 in)
Weight	4.6 kg (10 lb)
ECCN	EAR99



ISSI
INNOVATIVE SCIENTIFIC SOLUTIONS, INC

Visit our website: innssi.com/s3f